

SW 1/4 OF NW 1/4
SECTION 23, T5N, R2W, S.L.B. & M.

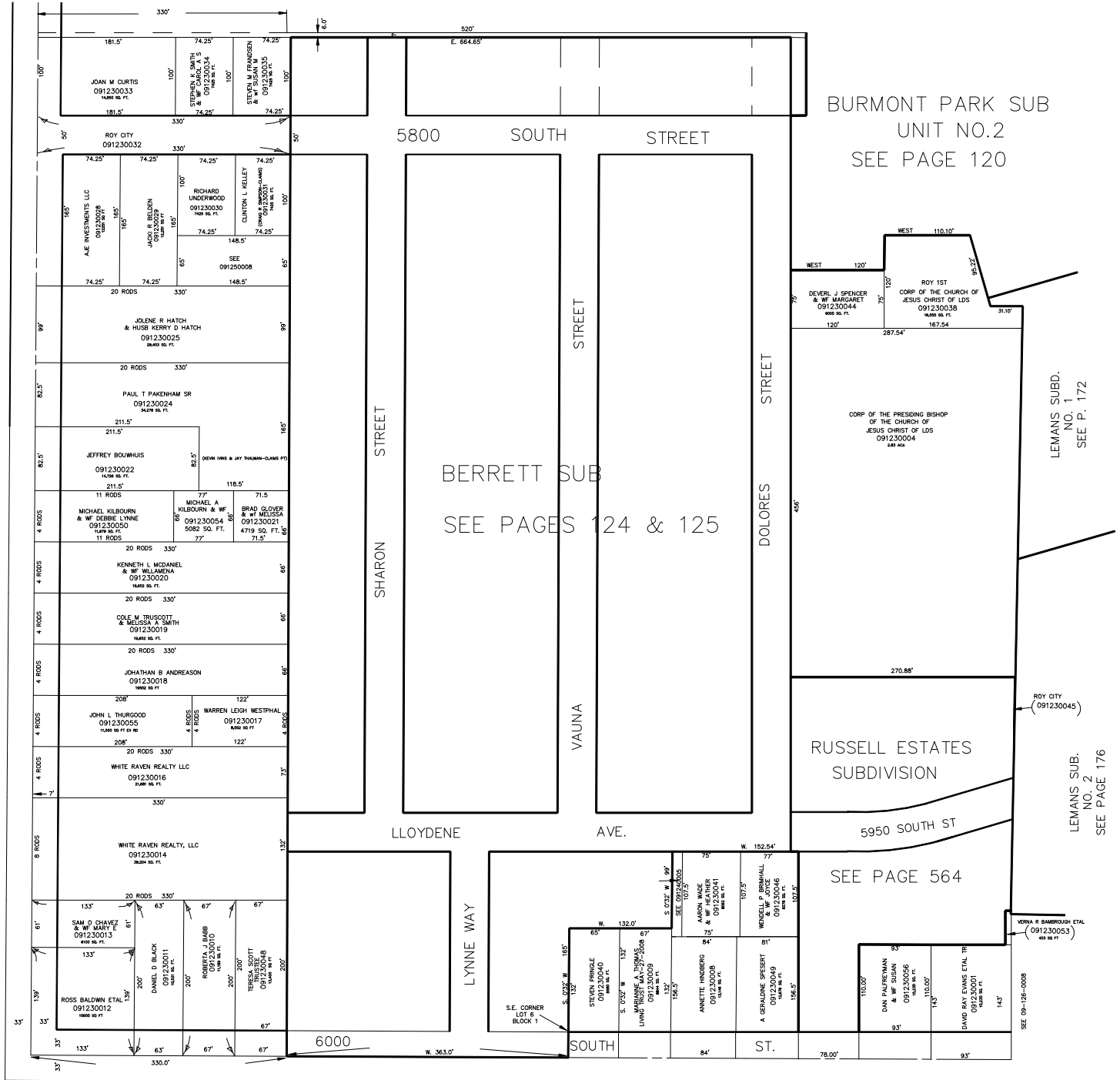
ROY CITY

TAXING UNIT: 41

SCALE 1" TO 100'

SEE PAGE 117

SEE PAGE 85



BERRETT SUB
SEE PAGES 124 & 125

BURMONT PARK SUB
UNIT NO.2
SEE PAGE 120

DEVERL J. SPENCER
& Wf. MARGARET
091230044
6000 sq. ft.

CORP OF THE PRESIDING BISHOP
OF THE CHURCH OF
JESUS CHRIST OF LDS
091230004
148 sq. ft.

RUSSELL ESTATES
SUBDIVISION

SEE PAGE 564

LEMANS SUBD.
NO. 1
SEE P. 172

LEMANS SUB.
NO. 2
SEE PAGE 176

VERNA R. BAMBROUGH ETAL
(091230053)
400 sq. ft.